

Anti-Wear Elbows EXTRABEND™

INTERNATIONAL PATENT

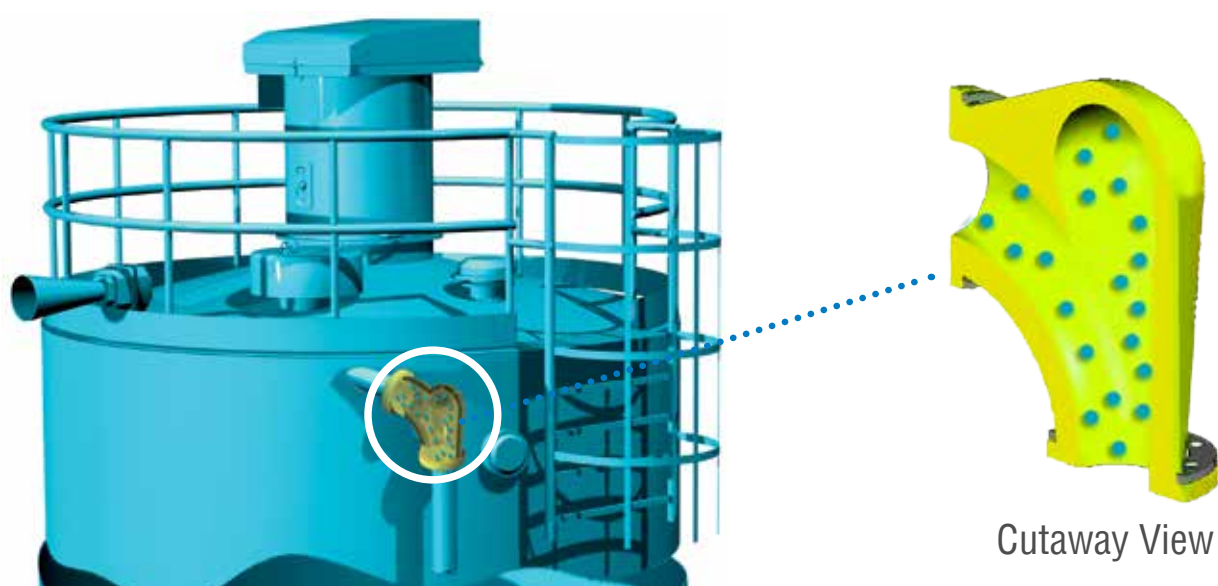


LIGHTWEIGHT AND DURABLE

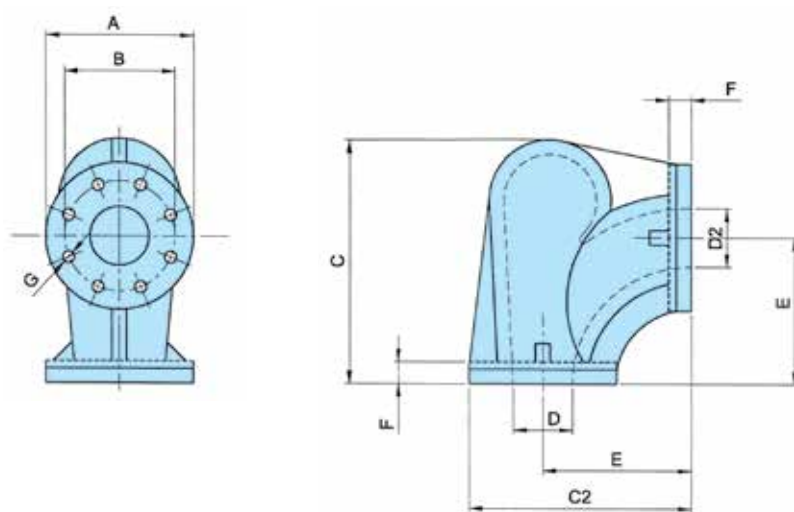
EXTRABEND™ are short radius Pipe Elbows that are inserted as a link in pneumatic conveying ducts. Their special geometry enables diversion of the material flow at minimum wear due to a dead zone at the point of diversion. The body cavity next to the point of diversion generates an internal turbulence of the material which protects the pipe elbow from wear caused by the material travelling through the duct.

Technical Features

- SINT™ engineering polymer-cast body design
- Different qualities of SINT™ engineering polymer available for handling plastic pellets, granules, sand or fine, abrasive or chemically highly aggressive powders
- PN-type connecting flanges
- Recommended for standard and food applications



Overall Dimensions



Type	Ø Piping	A	B	C	C2	ØD	ØD2	E	F	ØG	Flange Drillings	kg
EB2	2"	165	125	232	220	55	52	140	23	18	4	2
EB3	3"	200	160	330	300	85	80	200	30	18	4	5
EB4	4"	220	180	435	373	108	105	263	30	18	8	7

Bolts and nuts not included

Dimensions in mm

Benefits

- ✓ Elasticity of SINT™ ensures conveying of material without particle breakdown, grinding or jamming
- ✓ Eco-friendly
- ✓ Low cost for installation, pipeline support and installation thanks to compact design
- ✓ Minimised pressure drop
- ✓ Low wear on conveying pipe
- ✓ No risk of clogging
- ✓ Self-cleaning
- ✓ Lightweight and durable
- ✓ Reduced noise level
- ✓ No product contamination
- ✓ Particularly suitable for retrofitting
- ✓ Ex-stock delivery



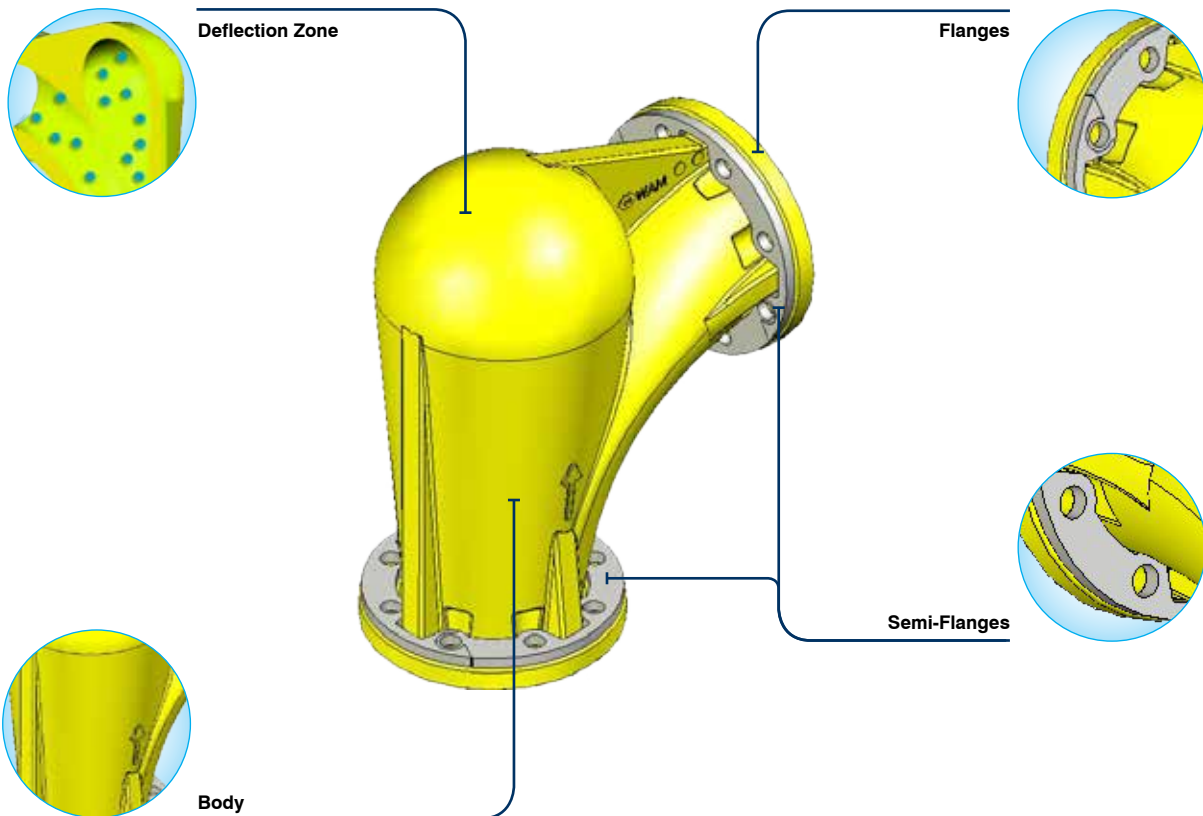
DURABLE = LOW MAINTENANCE COSTS



FLEXIBLE AND ADAPTABLE = LOW COST FOR INSTALLATION



LIGHTWEIGHT AND COMPACT DESIGN = NO NEED FOR LIFTING EQUIPMENT



Options

- Connecting spigot for existing ducts
- Food-grade version (FDA-approved)

Application



Plastics Processing



DryMix Processing



Flour Milling

